



## Frankfort's most urgent issue: Fix pensions

**FROM CALIFORNIA** to Rhode Island, state budgets are plagued by unfunded liabilities of public employee pension plans, and Kentucky is no exception. According to a recent report from the Pew Center on the States, Kentucky is one of only three states whose pensions were less than 55 percent funded in 2010. A sustainable system should be funded at 80 percent. Kentucky's failure to pay its annual pension contribution from 2005 to 2010 resulted in a \$17 billion funding gap and possibly the most significant threat the Commonwealth's financial well-being has ever faced.

### KENTUCKY'S PENSION CRISIS

Kentucky's financial condition is ranked 47th in the country because of our massive state debt and unfunded pension liabilities in relation to the gross state product, according to a recent Barron's report. Only Hawaii, Illinois and Connecticut ranked worse. The two major bond rating agencies have taken notice and downgraded Kentucky's bond rating, which means it is going to cost taxpayers more for such projects as the Ohio River bridges, new school construction and road improvements.

Unfortunately, this isn't breaking news for Kentucky lawmakers or the business community. The Chamber first highlighted the state's public pension problems in 2007 and again with its *Leaky Bucket* reports in 2009 and 2011 that identified the growing costs of Kentucky's public employee benefits. The business community and taxpayers alike have become increasingly aware that valuable tax dollars are being diverted from such critical areas as education and economic development to keep an unsustainable pension system afloat. With the pension system nearing a \$30 billion shortfall in 2012, none of us can afford to sit idly by.

Lawmakers have made encouraging steps, starting with modest reforms in 2008 and creating a task force during the most recent session to study Kentucky's public employee pension system. The Pew Center on the States is assisting the new task force and has just released a report documenting



the problems with our retirement system. The center also emphasizes the need for significant changes to make the system sustainable. As the task force continues to hear testimony and recommendations from the public on how to fix the ailing system, it is clear that employee and employer groups are not on the same page, particularly as it relates to pension benefits for state and local employees that are hired in the future.

The Chamber appeared before the task force recently with a number of recommendations that would help ensure pension benefits are available for retirees and help control future costs (see sidebar).

Kentucky must act now. The nature of the pension system, in which costs constantly accu-

### Stopping Kentucky's pension train wreck

**REDUCE HEALTH INSURANCE COSTS** – Public employee health insurance costs, which have increased nearly 200% since 2000, make up just over half of the required pension contribution. The Kaiser Family Foundation reports that the average annual premium for employer-provided single health coverage in Kentucky is \$4,683, with employers paying an average of 81% of premium costs. By comparison, the Kentucky Employee Health Plan reports that state government paid more than \$7,000 per year for single coverage in 2011 or 91% of premium costs. This cost is 50% higher than in the private sector. The Chamber suggests that state employees should contribute a minimum of \$50 per month to their health insurance plan to bring costs more in line with the private sector. The Chamber also recommends a more aggressive wellness plan for public employees, especially since current state wellness programs are voluntary.

**FREEZE COLA** – Currently a 1.5% annual cost-of-living increase is provided to retirees unless it is suspended by the legislature. This provision has been suspended in the current budget, but the Chamber recommends that suspension be ongoing until the pension system is more adequately funded. We simply cannot afford to increase the costs to this system while it is still underfunded.

**MOVE TO DEFINED CONTRIBUTION PLAN** – Defined benefit plans have largely been phased out in the private sector in favor of 401(k)-style plans. The Chamber recommends new employees be moved into a defined contribution plan and current employees be given incentives to convert to the new plan. By offering current employees the opportunity to move to a defined contribution plan, lawmakers will allow current employees more portability and control over their retirement funds.

mulate, requires immediate action to put the system on a sustainable track. Every year that passes without significant changes simply kicks the can down the road. Failing to act also continues the shortsighted and ill-advised trend of providing less money for education and economic development and more for benefits – the result of which will be a weakened position for Kentucky as it strives to compete in a global economy.

We encourage legislators and members of the business community to stay actively involved in this process as the task force proceeds. Kentucky faces a very difficult fiscal challenge, and it is one that can only be solved with comprehensive reform.

## Jim Booth to lead 2013 Board of Directors



Jim Booth, president of Booth Energy.

**JAMES H. BOOTH**, president of Booth Energy, has been elected chairman of the Kentucky Chamber's 2013 Board of Directors. Booth will head a 60-member board, representing a cross-section of Kentucky business and industry.

Booth is a lifelong resident of Martin County, Ky. After earning a degree in business administration from Morehead State University in 1971, Booth accepted a management position with Wolf Creek Collieries. He partnered to start his first contract mining operation in 1975 and has since added many more mining operations in the eastern Kentucky and West Virginia area. His mining group now supplies over seven million tons of coal annually to electric utilities in the eastern United States. Over the years, Booth and his associates

also entered into the retail industry. Combined, the mining operations and retail operations employ approximately 2,100 personnel in the eastern region of Kentucky and southern West Virginia.

During Booth's year of chairmanship, the Kentucky Chamber will focus on implementing its new strategic plan, as well as working with legislators on addressing the unfunded pension system.

He succeeds 2012 Chairman Luther Deaton, Jr., chairman, president and CEO of Central Bank & Trust in Lexington. Mary Pat Regan, president of AT&T Kentucky has been named chair-elect for 2013 and will serve as Kentucky Chamber Chairwoman in 2013. See page 4 for a full listing of the 2013 Board of Directors.

## Kentucky Chamber PAC endorses business-friendly candidates

**THE KENTUCKY CHAMBER** of Commerce's Political Action Committee (PAC) has endorsed 26 legislative candidates in the 2012 General Election; eight candidates for senate and 18 candidates for house. Endorsements made were based on a candidate's collective record and not any one specific issue.

The Kentucky Chamber PAC considered candidates

who submitted answers to the 2012 Candidate Survey and reviewed the voting records of incumbents.

Based on this review, the Chamber PAC endorsed candidates who demonstrated a willingness to support Kentucky's business community.

CONTINUED ON PAGE 2



## Welcome, new members!

Please help us thank these companies for investing in the Chamber's mission by giving them your business.

### Equity Partners

Eaton Electrical  
Dometic Corporation  
Sypris Solutions

### Trustees

JBS Swift & Company  
Splash Analytics

### General Members

Hanner Machine Company  
Capitol Auto Park  
Commercial Door & Hardware  
Tucker's Gateway Shop-O-Rama  
Advance Feeding System  
KEDC  
Alexander & Company  
CRS Reprocessing LLC  
Chesapeake Energy Corporation  
Kentucky Manufactured Housing Institute  
Children, Inc.  
York Companies  
Owensboro Convention Center  
Waltz Business Solutions  
Energy Insurance Agency  
Pike Technical Services  
Audubon Chrysler Center  
Montgomery Tractor Sales  
Florence Eye Care  
Boxcar PR  
South Louisville Body Shop  
Manufacturing Consulting International LLC  
Quad Graphics  
Fort Mitchell Garage  
Palladium Consulting Group  
City of Shepherdsville  
Pennyroyal Center  
The Dental Care Plus Group  
Ultimate Jet Charters  
Keller Timber Company LLC  
Employment Plus  
Industrial Machine Services

## PREPARING THE FUTURE WORKFORCE

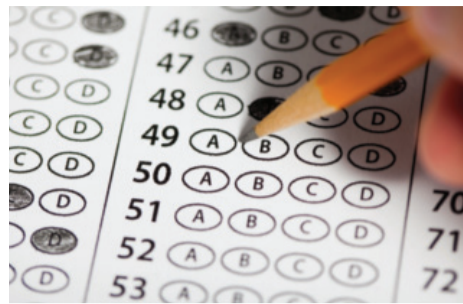
# Test scores provide glimpse of performance on tougher standards

### BRACE YOURSELF! Here they come.

Kentucky's public school students were tested for the first time last spring on tougher academic standards that the state has adopted to improve student preparation for college and career. The test scores and data on how well schools are doing so far are due this fall (the latest estimate of the release date was late October or early November).

State education officials and the Chamber have been talking for months about the possibility that the scores will be lower – or appear to be lower – than what Kentuckians have seen in previous years. That is particularly true in reading and math, the two areas where the challenging standards are being taught in classrooms statewide.

Several factors would contribute to lower scores, officials say. First, any new test leads to lower scores as educators and students become familiar with the style and content. But this year,



For more information on the Kentucky Chamber's support of academic standards, visit [kychamber.com/standards](http://kychamber.com/standards).

there are particularly challenging elements.

The standards require students to work harder than in the past, learning things in the third or fourth grade, for example, that they previously were taught in the fifth grade. In addition, the way the tests are scored will be different. In the past, schools and districts received an overall score on a scale of 0 to 140. Under the new system, the overall scale will

be 0 to 100. It isn't possible to compare the new scores with the old, and it may appear that scores have dropped.

Education officials believe the decline will be short term and that scores will improve as teachers and students become more familiar with the standards and better equipped to meet the challenges they present.

Meanwhile, they are urging the state's business community to be vocal about the importance of staying on track with the tougher standards and the potential they offer for preparing a higher quality workforce.

If the scores are lower, noted Education Commissioner Terry Holliday, "There's going to be a big outcry from parents, students, teachers and community people: 'What happened? What happened?' That's where we need our business community to step up and say, 'This is important for the future of Kentucky, and we need to stay the course.'"

## Chamber wins national award for Leadership Institute

**DURING A CONFERENCE** in Coeur d'Alene, Idaho, the Kentucky Chamber received three awards from the Association of State Chamber Professionals, including the prestigious President's Award.

The Chamber won the President's Award based on its efforts in creating the Leadership Institute for School Principals, a program offering public and private school principals an opportunity to receive executive leadership training from the nationally acclaimed Center for Creative Leadership.

Also during the conference, the Chamber's membership team received honorable mention in the areas of "Highest Retention Improvement in Membership Dollars" and "Highest Retention Improvement in Membership Numbers."

## FROM THE FRONT

# 26 candidates endorsed by PAC

Endorsed Senatorial candidates include:

**Stan Humphries** (R-Cadiz)  
**David Givins** (R-Greensburg)  
**John Schickel** (R-Union)  
**Chris Girdler** (R-Somerset)  
**Damon Thayer** (R-Georgetown)  
**Morgan McGarvey** (D-Louisville)  
**Chris McDaniel** (R-Taylor Mill)  
**Robert Stivers** (R-Manchester)

Endorsed House candidates include:

**Richard Heath** (R-Mayfield)  
**Kenny Imes** (R-Murray)  
**Tim Kline** (R-Owensboro)

**Jim Gooch** (D-Providence)  
**Tommy Thompson** (D-Owensboro)  
**Jeff Greer** (D-Brandenburg)  
**Ron Crimm** (R-Louisville)  
**Jonathan Shell** (R-Lancaster)  
**Rick Rand** (D-Bedford)  
**Bob DeWeese** (R-Louisville)  
**David Floyd** (R-Bardstown)  
**Kim King** (R-Harrodsburg)  
**Brian Linder** (R-Dry Ridge)  
**Ryan Quarles** (R-Georgetown)  
**Donna Mayfield** (R-Winchester)  
**Joshua Howard** (R-Pineville)  
**Robert Benvenuti** (R-Lexington)  
**Tanya Pullin** (D-South Shore)

**With your Chamber membership and our large networks, you and your employees can save from day one.**

As a Kentucky Chamber member, you're connected to big savings on big benefits for your small business, starting with special discounts on coverage from Anthem Blue Cross and Blue Shield.\* As an employer, you can give your employees health care coverage from Anthem and they'll be connected to savings, too – thanks to our large networks. We make sure when your employees visit a network doctor their cost is lower, even before they satisfy their deductible. So your employees can get the care they need to stay healthy. And healthy employees make for a healthy business.

Talk to your broker, call the Kentucky Chamber at 800-431-6833 or visit [www.anthem.com/chamberadvantage](http://www.anthem.com/chamberadvantage) for more information.

\*Discount only applies to Kentucky Chamber members who do not already have Anthem health coverage.

Anthem Blue Cross and Blue Shield is the trade name of Anthem Health Plans of Kentucky, Inc. Independent licensee of the Blue Cross and Blue Shield Association. ANTHEM is a registered trademark of Anthem Insurance Companies, Inc. The Blue Cross and Blue Shield names and symbols are registered marks of the Blue Cross and Blue Shield Association.

25977KVAENABS 11/11



## Scholarship named in honor of Beshears



At a reception for Key Investors and Board of Directors at the Kentucky Governor's Mansion, the Kentucky Chamber announced it will award a full scholarship for a school principal to attend the Leadership Institute for School Principals in honor of Gov. Steve Beshear and First Lady Jane Beshear. Improving education in Kentucky is the top priority for the Kentucky Chamber, and the Governor and First Lady are ardent supporters as well. Pictured from left is 2012 Kentucky Chamber Board Chair Luther Deaton (Central Bank & Trust), Mary Pat Regan (AT&T Kentucky), Gov. Steve Beshear and First Lady Jane Beshear.

## Holliday addresses Leadership Institute

Kentucky Education Commissioner Terry Holliday addressed the 2013 Class of the Leadership Institute for School Principals in September. For more on the Leadership Institute, visit [principalsleadky.com](http://principalsleadky.com).



## Adkisson, Allen talk education in N. Ky.

Kentucky Chamber President and CEO Dave Adkisson (above) and Hilliard Lyons CEO James Allen (left) addressed business leaders, school superintendents and the Northern Kentucky Chamber of Commerce Board of Directors about academic standards and workforce development during a visit on Sept. 26. Adkisson and Allen discussed the recently established Business Champions for Education (see page 7 for details) and the need for the business community to support the new education standards when test scores are released later this month.

## Chamber participates in World Trade Day



Former Gov. Martha Layne Collins, the Chamber's ambassador-at-large for international trade (left), and Jim Ford, vice president of Business Education (right), along with Jeanine Duncliff, of the Kentucky Export Initiative, participated in a discussion at Kentucky World Trade Day in Lexington on how Kentucky can increase international exports.

# DEGREES THAT MAKE A STATEMENT

**What does a degree say about you?** If it's from the right school – plenty. Earning your degree from Indiana Wesleyan University says that you value your education more than just the degree. And it says you are doing *everything* possible to secure a better future for your family and yourself.

With the option to take classes online or just one night a week at a nearby Indiana Wesleyan University Education Center, earning your degree is within your reach – without stretching you too far! Earn your degree in 18-32 months while being taught by instructors who are both academically and professionally accomplished. Register just once with no waiting in line. Books and materials are delivered to you and are included in the cost of the program.

## A degree from Indiana Wesleyan University makes a statement.

### Associate Degrees

- Accounting\*
- Business
- Christian Ministries
- Computer Information Technology\*
- Criminal Justice

### Bachelor's Degrees

- Accounting
- Addictions Counseling\*
- Biblical Studies\*
- Business Administration
- Business Information Systems\*
- Criminal Justice\*
- Management
- Marketing\*
- Nursing – BSN for RNs

### Master's Degrees

- Business Administration (MBA)
- Management
- Ministry – Master of Divinity\*
- Ministry – Youth Ministry\*
- Ministry – Ministerial Leadership\*
- Nursing

\*Online only. All other programs offered both online and in classroom format.

Degree and program offerings vary by location. Contact Indiana Wesleyan University today for a complete listing of available programs.

INDIANA  
WESLEYAN  
UNIVERSITY

*A recognized leader in  
adult education for over 27 years*

**Online/Lexington/Louisville  
Florence/Shepherdsville**

**INDWES.EDU  
866-498-4968**

# 2013 Kentucky Chamber Leadership: Committed to Advancing Kentucky

## Executive Committee Officers and Regional Representatives

<b>Board Chair</b>  Jim Booth President Booth Energy Lovely	<b>Chair-Elect</b>  Mary Pat Regan President AT&T Kentucky Louisville	<b>Immediate Past Chair</b>  Luther Deaton, Jr. Chairman/President/CEO Central Bank & Trust Company Lexington	<b>Treasurer</b>  Paula Hanson Director of Tax Services Dean Dorton Allen Ford, PLLC Lexington	<b>Vice Chair, Administration</b>  Chris Hermann Senior Vice President, Energy Delivery LG&E and KU Energy LLC Louisville	<b>Vice Chair, Business Education</b>  David Gray President Baptist Hospital East Louisville	<b>Vice Chair, Membership &amp; Marketing</b>  Elizabeth McCoy President Planters Bank, Inc. Hopkinsville	<b>Vice Chair, Public Affairs</b>  Wil James, Jr. President Toyota Motor Manufac- turing Kentucky, Inc. Georgetown
<b>Small Business Representative</b>  Tierra Kavanaugh Turner CEO TKT-Necir Global Staffing, LLC Louisville	<b>Chairman, Kentucky Chamber Foundation</b>  Dan Bork Vice President of Corporate Tax Lexmark International, Inc. Lexington	<b>At-Large Member</b>  Kevin Canafax VP Midwest Public Affairs Fidelity Investments Covington	<b>At-Large Member</b>  Steve Loyal VP, Government Affairs Atmos Energy Corporation Owensboro	<b>At-Large Member</b>  Deidre Lyons Co-Vice President, Director of Corporate Image & Project Management Alltech, Inc. Nicholasville	<b>At-Large Member</b>  Lynn Parrish President Marwood Land Company Pikeville	<b>President &amp; CEO</b>  David Adkisson Kentucky Chamber of Commerce Frankfort	

## Board of Directors Business leaders from every region in the state who govern the Kentucky Chamber

 Rodney Bohannon Plant Manager Briggs & Stratton Corporation Murray	 Stephen Branscum President/CEO Beanscum Construction Company Russell Springs	 Carolyn Brown Deputy Chair Lexington Office & Chair, Natural Resources Environmental Practice Group Bingham Greenebaum Doll LLP Lexington	 Craig Browning President - South-Central Kentucky U.S. Bank Bowling Green	 Malcolm Bryant COO The Malcolm Bryant Corporation Owensboro	 Harold Butler COO Sites & Harbison PLLC Louisville	 James Cantrell Manager Marathon Petroleum Company LP Catlettsburg	 Scott Casey Vice President, Legal and Public Affairs UPS Louisville	 Rusty Chevront Assistant Vice President, Director Global Community Relations Brown-Forman Corporation Louisville	 John Chilton, CPA Partner Mountjoy Chilton Medley LLP Louisville
 Bill Corum President Kentucky Association of Electric Cooperatives, Inc. Louisville	 Paul Costel Senior Vice President Chase Kentucky Louisville	 Joseph Craft III President/CEO Alliance Resource Partners, LP and Alliance Coal LLC Lexington	 Laura D'Angelo Partner Dinsmore & Shohl LLP Lexington	 Steven Dasch Senior Vice President Citigroup Florence	 Juanita Deskins COO Pikeville Medical Center Pikeville	 Charles "Buzz" English, Jr. Partner English Lucas Priest & Owsley, LLP Bowling Green	 Kevin Flanery Senior Vice President, Churchill Downs Inc. Louisville	 Terry Forcht Chairman/CEO Forcht Group of Kentucky Lexington	 Hal Goode President Kentucky Association for Economic Development Frankfort
 Stephen Gray President/CEO Gray Inc. and Gray Construction Lexington	 Stephen Grossman Member J.J.B. Hilliard, W.L. Lyons, LLC Lexington	 Eric Haas President National Band & Tag Company Newport	 Tim Hagerty Partner Frost Brown Todd LLC Louisville	 John Harryman President Norton Brownsboro Hospital Louisville	 Larry Hayes* Secretary Kentucky Cabinet for Economic Development Frankfort	 Steve Higdon Partner and Executive Vice President Faulkner Real Estate Louisville	 Joel Hopper President Brenntag Mid-South, Inc. Henderson	 Alice Houston President Houston-Johnson, Inc. Louisville	 Julie Janson President Duke Energy OH & KY Duke Energy Corporation Cincinnati, Ohio
 Franklin Jelsma Partner Wyatt, Tarrant & Combs, LLP Louisville	 Dr. Michael Karpf Executive Vice President for Health Affairs University of Kentucky HealthCare Lexington	 David Kemmerly Director, State Government Relations Humana Inc. Louisville	 Lynn King Regional Director Lourdes Hospital Paducah	 Robert King* Council on Postsecondary Education Frankfort	 Bill Lear, Jr. Member Stoll Keenon Ogden, PLLC Lexington	 Steve Lochmueller CEO Lightyear Network Solutions, LLC Louisville	 Millie Marshall Vice President, Human Resources Toyota Motor Engineering & Manufacturing North America Erlanger	 Ann McBrayer President Kentucky Eagle, Inc. Lexington	 Dr. Michael McCall* President Kentucky Community & Technical College System Versailles
 Deb Moessner President and General Manager Anthem Blue Cross and Blue Shield of Kentucky Louisville	 Jim Morehead Director, U.S. Manufacturing Beam, Inc. Clermont	 Cheryl Norton President Kentucky American Water Lexington	 Greg Pauley President/COO AEP/Kentucky Power Company Frankfort	 Randy Schumaker President Logan Aluminum, Inc. Russellville	 Tony Thompson Executive Vice President North American Operations Papa John's International, Inc. Louisville	 Dr. Linda Vitale President Computer Services, Inc. Bowling Green	 Curtis Warfield CEO Parallon Business Performance Group Louisville		

## Local Chamber Advisory Board Chamber executives from local communities who advise the board on regional business issues

 Lance Allison* President/CEO Murray-Calloway County Chamber KCCCE President Murray	 Jared Arnett* President/CEO Southeast Kentucky Chamber Pikeville	 Ron Bunch* President/CEO Bowling Green Area Chamber Bowling Green	 Bruce Carpenter* Executive Director Southern Kentucky Chamber Corbin	 Bill Hannah* President Ashland Alliance Ashland	 Amy Jackson* President Greater Owensboro Chamber Owensboro	 Bob Quick, CCE* President/CEO Commerce Lexington Inc. Lexington	 Brad Richardson* President/CEO Hardin County Chamber Elizabethtown	 Elaine Spalding* President Paducah Area Chamber Paducah	 Steve Stevens, CCE* Interim President/CEO Northern Kentucky Chamber Ft. Mitchell	 Tracee Trout* Interim President Greater Louisville Inc. Louisville
 Company LP James Cantrell Manager Catlettsburg	 Medley LLP Diane Medley Co-managing Partner Louisville	 Handling Group Steve Lawson HR Manager Berea	 Health System, Inc. Jeff Barber President/CEO Owensboro	 Mark Carter CEO Louisville	 Mary Mucci President/CEO Rochester, NY	 Juanita Deskins COO Pikeville	 Elizabeth McCoy President/CEO Hopkinsville	 Joseph Steier III President/CEO Louisville	 John Cliff Vice President Louisville	 Jeff Gordon General Counsel Louisville
 Foley CEO Louisville	 Matt Adams Gen. Mgr./Gen. Affairs Bowling Green	 Corporation Ron Anglin Plant Manager Bowling Green	 Michael Kane VP of Manufacturing Lexington	 Staffing, LLC Tierra Kavanaugh President Louisville	 Dr. Michael Karpf Executive VP, Health Affairs Lexington	 Health Plans, Inc. Mike Minor CEO Louisville	 Elmer Whitaker CEO Lexington	 Communications Jamie Mullins Director Business Sales Louisville		

## Commonwealth Partners

 at&t	 BROWN-FORMAN	
 Mary Pat Regan President, AT&T Kentucky Louisville	 Paul Varga Executive Chairman President/CEO Louisville	
 Guidance when you need it most		
 Mike McCallister President/CEO Louisville	 Victor Staffieri President/CEO Louisville	 Steve St. Angelo CEO Georgetown

The Kentucky Chamber's Key Investors are an exclusive group of top Kentucky executives whose companies provide significant financial support and leadership for Chamber involvement in critical issues affecting Kentucky businesses.

## Chairman's Circle

 Aunt of American Electric Power				
 Greg Pauley President/COO Frankfort	 Deborah Moessner President/General Manager Louisville	 Tommy Smith President/CEO Louisville	 Jim Booth President Lovely	 Robert Strub Head of Collections - North America Florence
 Kevin Canafax VP Midwest Public Affairs Covington	 Paul Rooke Chairman of the Board/CEO Lexington	 Stephen Williams President/CEO Louisville	 Charles Denny Regional President Louisville	 William Jones Community Division Manager Paducah

## Presidential Advisors

 Harry Childress Director of Government and External Affairs for Kentucky Abingdon, Va.	 Don Calloway Director, Government Affairs St. Louis, MO	 Stephen Loyal VP, Government Affairs Owensboro	 Hoyt Almond Regional President, Western Kentucky Region Louisville	 Phillip Scott Chairman Lexington	 Rodney Bohannon Plant Manager Murray	 Luther Deaton, Jr. Chairman/President/CEO Lexington	 Paul Costel Kentucky President Louisville	 Kevin Flanery Senior VP Louisville	 Michael Murphy President & CEO Louisville
 Laura D'Angelo Partner	 Julie Janson President - Duke Energy Ohio & Kentucky Cincinnati	 David Cannon Jr. Deputy General Counsel, Government & Environmental Affairs Pittsburgh, Penn.	 Tom Partridge President/CEO, Louisville, Lexington Louisville	 John Crockett Chairman Louisville	 Kim Shelton General Manager Lexington	 Kevin Riddett President Louisville	 Nathan Crosley Plant Manager Frankfort	 Cheryl Norton President Lexington	 Bill Corum President Louisville
 Mary Jean Riley V.P. Finance/ Administration Ghent	 John Schnatter Founder/Chairman/CEO Louisville	 Joshua Brown Director of Government Relations & Public Affairs Franklin, Tenn.	 Nicholas Simon President Shepherdsville	 Harold Butler COO Louisville	 J. David Smith, Jr. Managing Director Lexington	 Rick Anderson President, North America Lexington	 Steven Penrod General Manager Paducah	 Scott Casey VP, Legal/Public Affairs Louisville	 William Hollander Managing Partner Louisville
 Craig Adkins VP, Fulfillment Operations Shepherdsville									

## Trustees

 Kenny Allen VP Operations Madisonville	 Joel Hopper Henderson	 Roy Potts Director, Public Affairs & Communications Louisville	 Herbert Miller, Jr. President Lexington	 Paula Hanson Director of Tax Services Lexington	 Lloyd Hilliard, Jr. President/CEO Frankfort	 Stephen Gray President & CEO Lexington	 Wayne Martin President Lexington	 Dr. Michael McCall President Versailles	 John Steiner Executive Director/CEO Lexington	 Jean Rush President/CEO Lexington	 Vicky Weber President Louisville	 Dr. Andrew Henderson Lexington	 Randy Schumaker Russellville	 Lynn King Regional Director Paducah	 Mitch Wagner VP, CEO Louisville
 Jeff Cole Director of Marketing Maumee, OH	 Todd Spencer President/CEO Louisville	 Clifton Morehead Manager, Government Relations Cincinnati, Ohio	 John Evans Plant Manager Morehead	 Michelle Mees Harper Assistant General Counsel Louisville	 Jeff Gordon General Counsel Louisville										

Trustees not pictured:

- AK Steel Corporation  
Barry Racey  
Director, Government/  
Public Relations  
West Chester, Ohio
- Kentucky Farm Bureau Insurance  
Bradley Smith  
Executive V.P./CEO  
Louisville
- Kentucky Medical Services Foundation, Inc.  
Darrell Griffith  
Executive Director  
Lexington
- Louisville Bedding Company  
Alice Walter  
VP, Human Resources  
Froenzer  
Louisville
- Ralcop Frozen Bakery  
Products  
Ed Justice  
Manager, Employee & Community  
Relations  
Louisville
- Jeff Cole  
Regional Director  
Maumee, OH
- SRG Global  
John Evans  
Plant Manager  
Morehead
- Steel Technologies  
Michelle Mees Harper  
Assistant General Counsel  
Louisville
- Sun Tan City  
Jeff Gordon  
General Counsel  
Louisville



Kentucky Chamber

KENTUCKY CHAMBER NEWS

A Kentucky Chamber of Commerce Publication October 2012

Kentucky Chamber News is published six times per year by the Kentucky Chamber of Commerce

Publisher: Dave Adkisson
Editor & Designer: Jessica Fletcher

464 Chenault Rd.
Frankfort, KY 40601
kychamber.com

For address changes and subscription information, call Member Services at 502-848-8739. For advertising information, contact Andrea Flanders at 502-848-8723.

VALUABLE CHAMBER SERVICES

ChamberAdvantage
502-848-8724
Group health insurance underwritten by Anthem Blue Cross and Blue Shield

Certificates of Origin
502-848-8724
Trade document required by some customs authorities

Office Depot Discount Program
502-848-8724
Office products and services with free next-day delivery

Paychex
502-245-6600 ext. 22410
Payroll processing and payroll tax administration

Small Business Navigator
502-848-8791
sbnnav@kychamber.com
General guidance on state requirements and a variety of resources available to small businesses

UPS Freight
866-443-9303, ext. 4082
associations@upsfreight.com
Offering Kentucky Chamber Members discounts starting at 70% on LTL (Less-Than-Truckload) services

Tax amnesty program begins

KENTUCKY is launching a Tax Amnesty program allowing people or businesses who owe back taxes to the Commonwealth of Kentucky to pay with no fees or penalties.

The 61-day program kicked off Oct. 1. Delinquent taxpayers will soon receive mailed notifications stating the known amount of back taxes.

Chamber publishes book on health care law

IN AN EFFORT to educate Kentucky business leaders about the impact of the Affordable Care Act, the Kentucky Chamber recently hosted a series of day-long conferences and published a guide on what the reform means to them.

The guide, written by Margaret Levi of Wyatt, Tarrant & Combs, features chapters on:
- History of the Affordable Care Act
- Expanding Access to Health Insurance
- Expanding Health Insurance Coverage
- Limiting Health Care Costs
- Funding for the Affordable Care Act
- Program Integrity Provisions

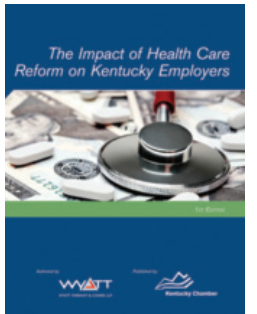
The conferences featured presentations on accountable care organizations and a panel discussion on health insurance exchanges. They

also covered how the Supreme Court decision on PPACA affects employers and employer-sponsored insurance plans.

To order, visit hrkentucky.com/bookstore or call Lori Jo Hill at 502-848-8727.

To access the guide today, you can subscribe to HRKentucky.com and download in its entirety.

Chamber Advantage Members will receive an additional 25% off by calling to place their order.



Chamber website gets a new look

IN SEPTEMBER, the Kentucky Chamber re-launched its website, thanks to help from Lexington-based web developers Able Engine. With easy navigation, new graphics and a cleaner look, finding resources and registering for events is a snap.

- Links to Chamber news stories
- A list of options on how to get involved with the Chamber
- A library of Chamber reports and research like Ready for Jobs? and The Leaky Bucket
- Small business member information center

If you're having trouble locating something, you can also try the "Search" feature located in the upper right-hand corner of each page.

It's now easier than ever to purchase items from our bookstore and register for educational seminars and business events. Just login to your Kentucky Chamber account using your email address as your username.

We hope you'll find our website to be user-friendly. If you have questions, please contact Communications Director Jessica Fletcher at jfletcher@kychamber.com.



Sign up today for the Kentucky Chamber UPS Freight Savings Program and get started. Pickup Notifications for LTL is free of charge and available to customers scheduling a UPS Freight pickup on ups.com.

Take guesswork out of LTL pickups this season

UPS is working hard to make shipping easy for Kentucky Chamber members. With UPS Freight Pickup Notifications for LTL, you have unprecedented visibility into the entire pickup process.

Receive alerts when:

- The pickup is scheduled, completed, or delayed
- Your UPS Freight driver is on his way to your location

We'll send an email alert when your pickup is the next stop on the driver's route, helping to ensure the shipper is prepared for the pickup. Need to re-schedule the pickup? No problem. The notification message links to our website where you can easily re-schedule or cancel the pickup.

Revolving around you and your business.

BrickStreet Insurance is revolutionizing workers' compensation with an innovative approach we call BrickStreet 360. We will surround you with a comprehensive team of professionals who provide prompt, personalized service to assist in creating a safer work environment, as well as managing the claims and return-to-work process if an employee does get injured.

Workers' Compensation Insurance

Your Business. Your People. You're Covered.™

1.866.452.7425 • brickstreet.com



# Business leaders advocating for educational excellence

**A FEW YEARS BACK**, a skeptical observer of Kentucky's political and policy landscape made a comment that got some attention. The state's business community, he said, had developed "a bad case of laryngitis" when it came to speaking out about important education issues.

In my view, the individual and collective efforts of employers on behalf of education over the years contradict that assertion to a significant degree. Still, there was some validity to the point: Kentucky's employers on a statewide level seemingly were less involved in – and had less to say about – school improvement efforts than in the past.

Perhaps it was business' prominence in earlier education debates that highlighted the contrast. The 1990 Kentucky Education Reform Act was arguably the most prominent example of business engagement, when leading employers helped carry the fight for changes that put the state on the right path toward improving its schools.

Vocal business support was again in evidence in 1997 when the state passed major reforms of the higher education system. And there have been numerous, lower-profile examples at the community and state level since then.

But Kentucky is once again at a critical place in its quest for educational excellence – a reality that has prompted employers from across Kentucky to come together to create the Business Leader Champions for Education. Our agenda: to push for dramatic improvement in the state's schools and to support educators and students as they work to achieve excellence.

Business Leader Champions is a joint initiative of the Kentucky Chamber Foundation and the Prichard Committee for Academic Excellence. Our group is made up of corporate executives and other business leaders from across the Commonwealth who will serve as the employer voice in urging the state to provide an education of the highest possible quality for Kentucky's citizens.

Our initial focus will be support for the new, tougher academic standards now being taught in Kentucky's classrooms. These internationally benchmarked standards are focused on



## Guest Commentary

By **James Allen**, Chairman of Business Leader Champions for Education and CEO of Hilliard Lyons

better preparing students for college and the workplace, something of critical importance to the state's employers.

These changes hold great promise for helping Kentucky develop better informed and engaged citizens and a more highly skilled workforce that is better equipped to meet the needs of employers and ensure economic growth.

Kentucky's schools have completed their first year operating under the new standards, tests have been given, and the scores are expected in the fall.

Business Leader Champions for Education will communicate to educators, students, parents, policy leaders and other Kentuckians about the vital importance of staying the course with the new standards – and the challenging

work they require – to build a world-class education system in the state.

This effort is part of an initiative of the Chamber Foundation, working in partnership with the Prichard Committee, to raise employer awareness of and support for the new standards. The initiative has the support of the Bill & Melinda Gates Foundation.

Business Leaders Champions for Education plans to speak up publicly about developments that it believes will help, or hinder, the state's progress toward excellence.

We believe it is time for Kentucky's employers to make ourselves heard, in an organized, positive and constructive way, about what we need our schools to be to ensure a prosperous future for the state and all of its citizens. We plan to be vocal in our support for schools, students and teachers as they work to make that stronger future a reality.



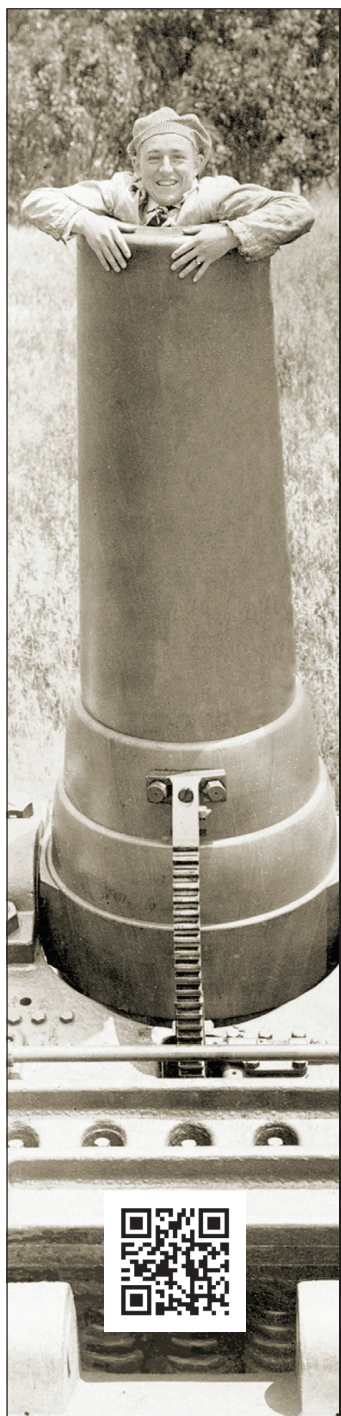
## Business Leader Champions for Education

**DOZENS OF BUSINESS LEADERS** from across Kentucky have come together to push for dramatic improvement in the state's schools and to support educators and students as they work toward that goal.

The Business Leader Champions for Education is chaired by James R. Allen of Louisville, CEO of Hilliard Lyons, and is a joint initiative of the Kentucky Chamber Foundation and the Prichard Committee for Academic Excellence. The group is made up of corporate executives and other business leaders from across the Commonwealth who will serve as the employer voice in urging the state to provide an education of the highest possible quality for Kentucky's citizens.

**Dave Adkisson**, Kentucky Chamber of Commerce  
**James R. Allen**, Hilliard Lyons  
**Bobby Arnold**, Republic Bancorp  
**Rodney Bohannon**, Briggs & Stratton  
**Tony Bohn**, Norton Healthcare  
**Jeff Bringardner**, Humana Inc.  
**Dave Calzi**, Ernst & Young  
**Kevin Canafax**, Fidelity Investments  
**Rowan Claypool**, Teach Kentucky Inc.  
**Brent Cooper**, C-Forward, Inc.  
**Sam Corbett**, Sam Meyers  
**Paul Costel**, Chase Kentucky  
**John Crockett**, Frost Brown Todd  
**Charles Denny**, PNC Bank  
**Vince Gabbert**, Keeneland Association  
**John Gant**, Carbide Industries  
**Ed Glasscock**, Frost Brown Todd  
**Jean Hale**, Community Trust Bancorp  
**Paula Hanson**, Dean Dorton Allen Ford  
**Joseph Hardesty**, Stites & Harbison  
**Billy Harper**, Harper Industries  
**Dennis Heishman**, Old National Bancorp  
**David Heintzman**, Stock Yards Bank and Trust  
**Kennedy Helm**, Stites & Harbison  
**Audwin Helton**, Spatial Data Integrations  
**Henry Heuser**, Unistar/Vogt  
**Debra Hoffer**, Junior Achievement of Kentuckiana  
**Bill Hollander**, Wyatt Tarrant & Combs  
**Joel Hopper**, Brenntag Mid-South  
**Alice Houston**, Houston-Johnson, Inc.  
**Franklin Jelsma**, Wyatt Tarrant & Combs  
**David Jones Jr.**, Chrysalis Ventures  
**Jeff Kosse**, Fifth Third Bank

**William Lear**, Stoll Keenon Ogden  
**Charles Maddux**, Propulsys, Inc.  
**Pete Mahurin**, Hilliard Lyons Financial Services  
**Tom Meeker**, retired, Churchill Downs  
**Deb Moessner**, Anthem Blue Cross and Blue Shield of Kentucky  
**Jerry Morris**, Southern Star Central Gas Pipeline  
**Michael Mountjoy**, Mountjoy Chilton Medley  
**Pat Mulloy**, Elmcroft Senior Living  
**Mitch Nichols**, UPS Airlines  
**Nick Nicholson**, Keeneland Association  
**Cheryl Norton**, Kentucky American Water  
**Tom Partridge**, Fifth Third Bank  
**Eileen Pickett**, Greater Louisville Inc.  
**Mary Pat Regan**, AT&T Kentucky  
**Kevin Riddett**, Invensys Rail  
**Paul Rooke**, Lexmark International Inc.  
**Steve Rudolf**, Baptist Hospital East  
**Ken Selvaggi**, WAVE 3-TV  
**Mark Shirkness**, General Electric  
**Stu Silberman**, Prichard Committee for Academic Excellence  
**Barbara Sexton Smith**, Fund for the Arts  
**Victor Staffieri**, LG&E and KU Energy LLC  
**Steve Tarver**, YMCA of Greater Louisville  
**Carl Thomas**, Gheens Foundation  
**Jeff Uligian**, Genentech  
**Tina Walters**, JPMorgan Chase Foundation  
**John Williams**, CSI  
**Stephen Williams**, Norton Healthcare  
**Kathy Zandona**, Greater Louisville Inc.



## THERE ARE EASIER WAYS TO GIVE YOUR TEAM A BOOST.

Sullivan University and Dale Carnegie Training have partnered to offer practical, industry-specific **Professional Development Certificates** for your team. A fast-paced blend of Carnegie **classroom** sessions and Sullivan **online** learning, each Certificate earns **20 hours of college credit**. More important, these **short-term programs** focus on practical knowledge and interpersonal skills to produce fast, **long-term results**.

### Certificates include:

- Healthcare Management
- HR Management
- Conflict Management
- IT Management
- Professional Sales
- ... and a number of others.

Give your team a boost today. Get details and register online at [sullivan.edu/dc/certificates](http://sullivan.edu/dc/certificates).

**Sullivan University**

**DALE CARNEGIE TRAINING**

REGISTER ONLINE: [sullivan.edu/dc/certificates](http://sullivan.edu/dc/certificates)



# Save the Date

The Kentucky Chamber's  
**Annual Policy Conference**  
 A Legislative Preview

December 10, 2012  
 8 a.m. – 5 p.m.  
 Griffin Gate Marriott Resort & Spa  
 Lexington, Ky.

presented by **BROWN-FORMAN**

Register at [kychamber.com/events](http://kychamber.com/events)

**NEACE LUKENS**

*in a word: different*

**Employee Benefits. Customized Solutions.**

With the resources of a national firm and the service of a local, independent office - we **become your trusted advisor for the long term.**

**CONTACT:**  
 Brian Nichols,  
 Senior Account Executive  
 Phone: 502.259.9271  
[brian.nichols@neacelukens.com](mailto:brian.nichols@neacelukens.com)  
[www.neacelukens.com](http://www.neacelukens.com)

# Find your way at Midway!

Midway College offers students a variety of options. Students can choose to attend classes during the day, evenings, weekends or online anytime. Midway College has more than 30 majors and many programs are offered in an accelerated format allowing students with prior college credit to finish in 20 months or less.

Business Administration  
Equine Studies  
Health Care Administration  
Master of Arts in Teaching (MAT)  
MBA  
Mining Management  
Nursing (ADN and RN-BSN)  
Psychology  
Public Safety  
Sport Management  
Teacher Education



WAY!  
TO GO!



Taylor Wade '12

Matt Stone '12



OCTOBER 2012



# news

## Chamber works to stop pension train wreck



800-639-7588

info@midway.edu

Chat at [midway.edu](http://midway.edu)

Lexington • Midway • Somerset • McKee • Radcliff • Online

Midway College is an equal opportunity institution.